

# GRAPH I CIRCULATION in HOME READING DEPT

NON FICTION

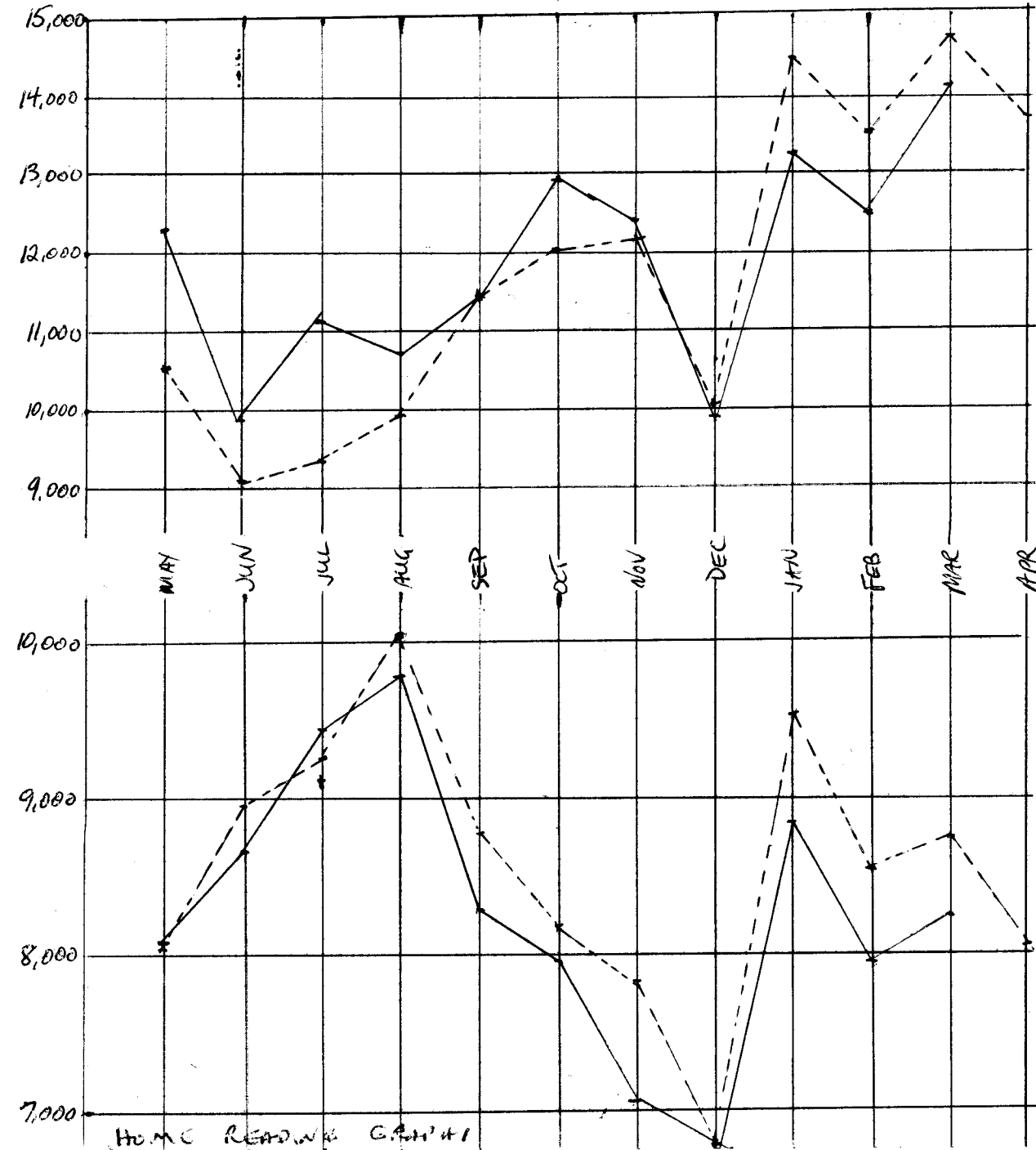
'72/'73 - - - -

'73/'74 ————

FICTION

'72/'73 - - - -

'73/'74 ————



# GRAPH II

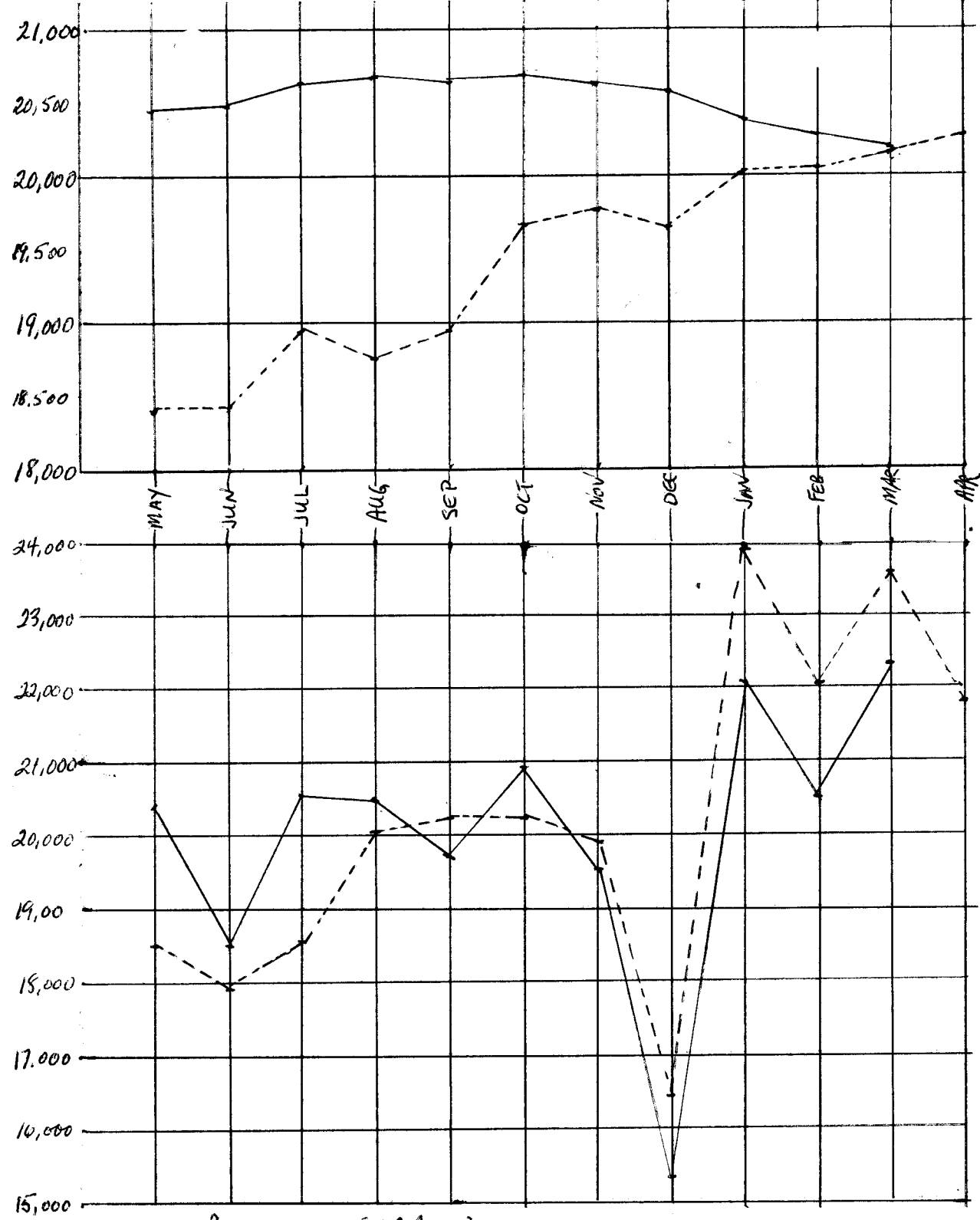
Running Monthly Average

'72/'73 - - - -

'73/'74 - - - -

$\frac{\text{Previous 12 months}}{12}$  = monthly trendline

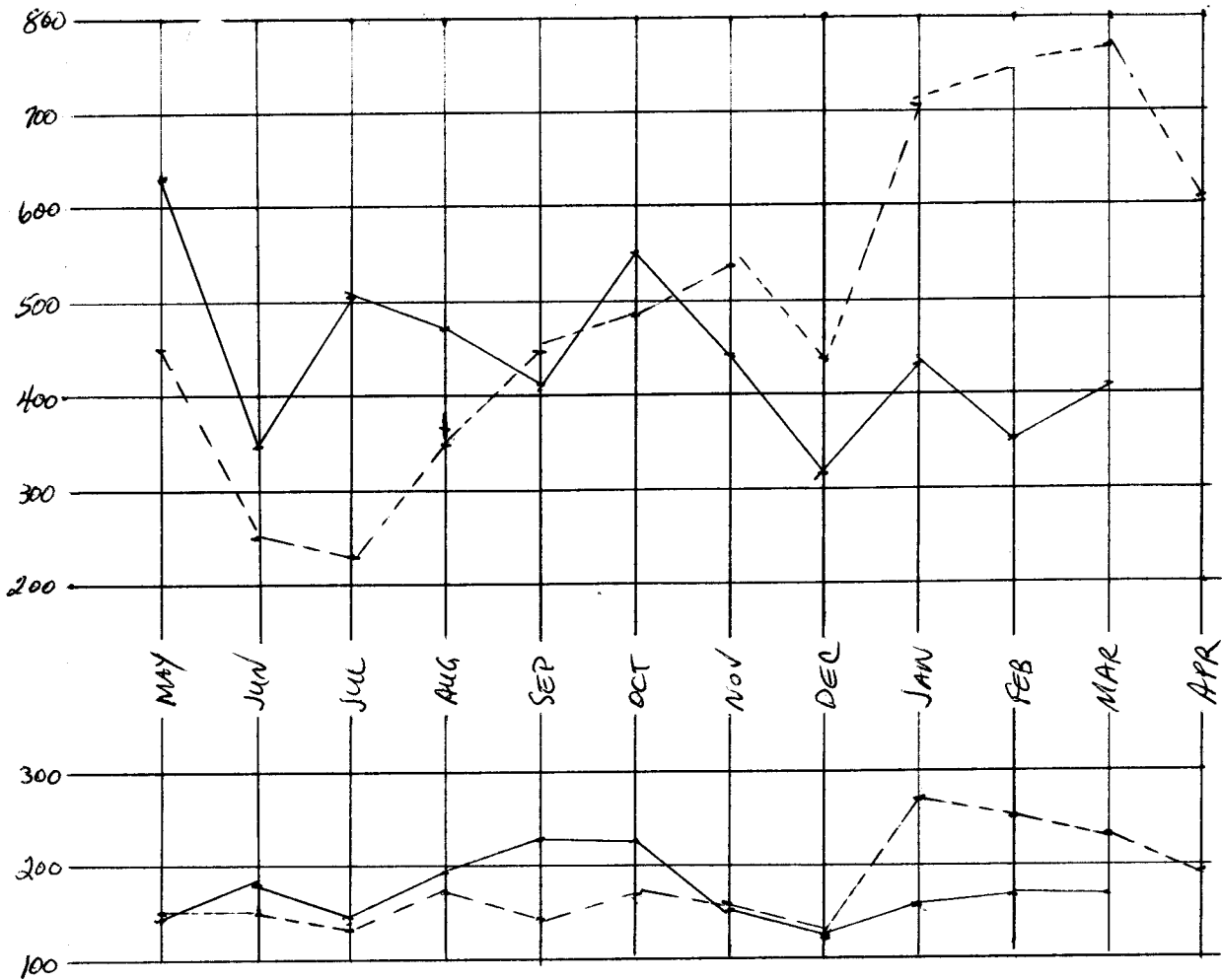
CIRCULATION  
HOME READING DEPT



Total Circulation

'72/'73 - - - -

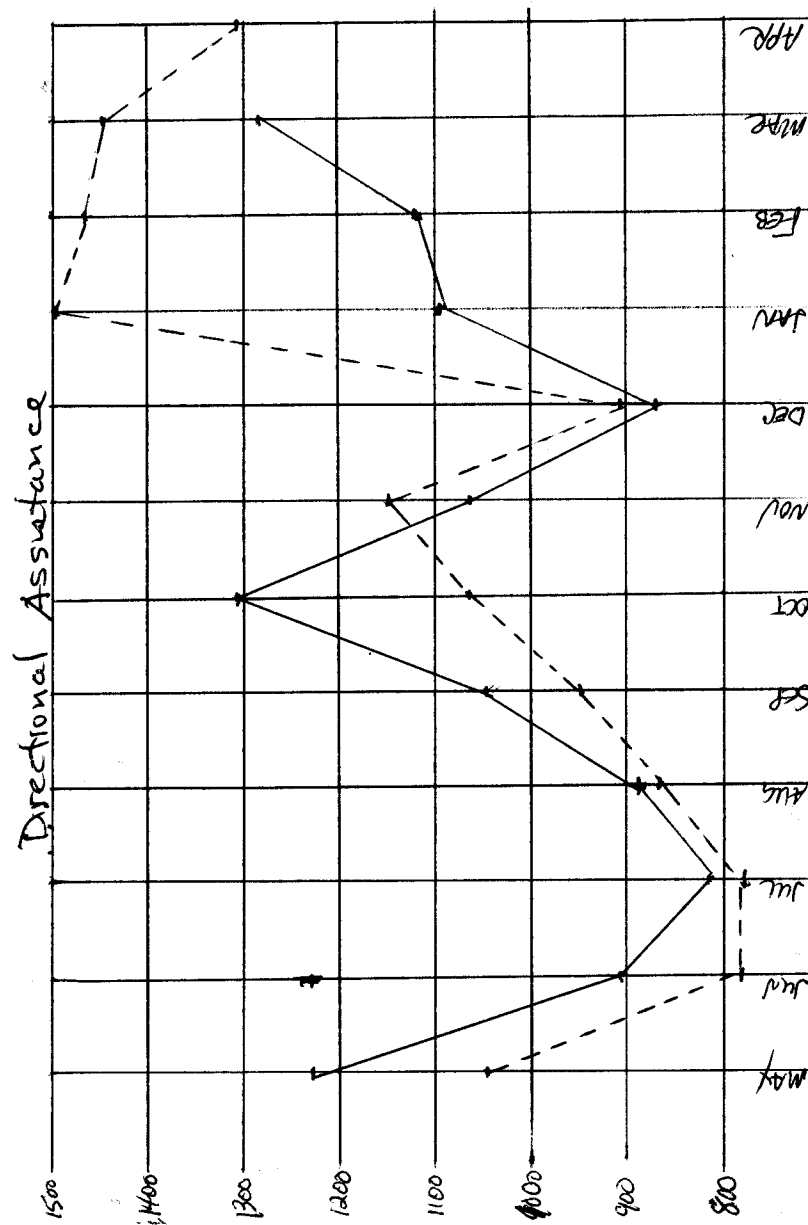
'73/'74 - - - -



REQUESTS (RESERVED BOOKS)  
 '72/'73 ---  
 '73/'74 —  
 (NON-PROF.)

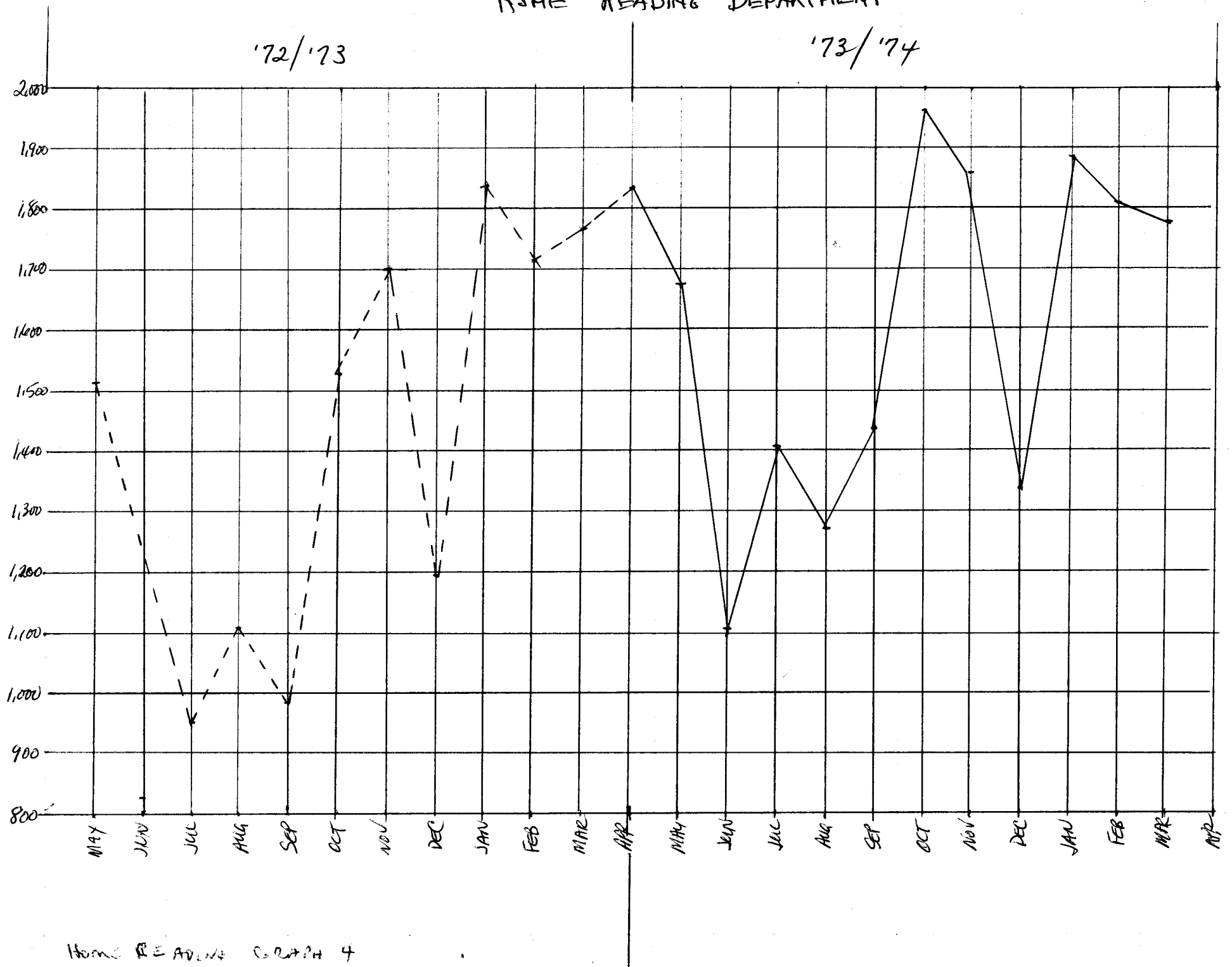
GRAPH III

← RA '72/'73 --- '73/'74 —  
 (PROFESSORIAL ASSISTANCE)  
 DI '72/'73 ---  
 '73/'74 —  
 (NON-PROF.)



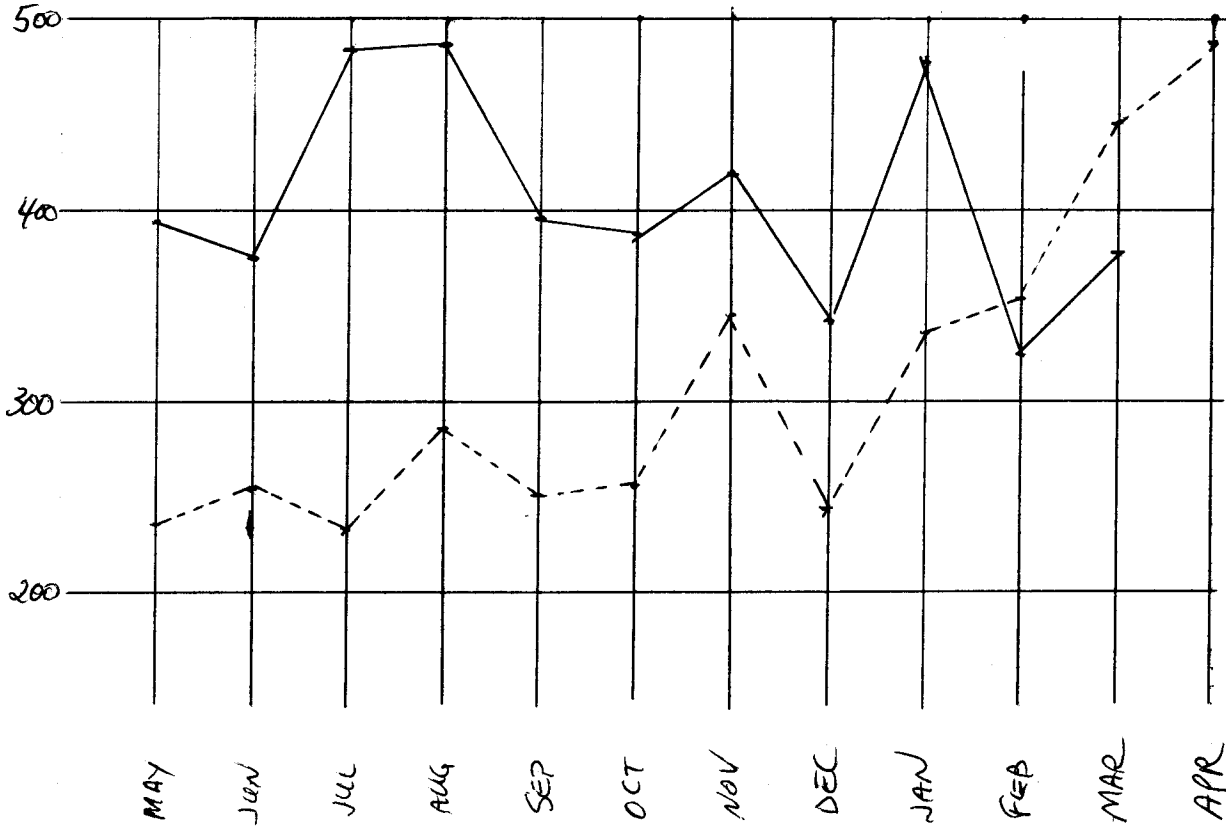
PERIODICAL CIRCULATION  
HOME READING DEPARTMENT

GRAPH 'K'

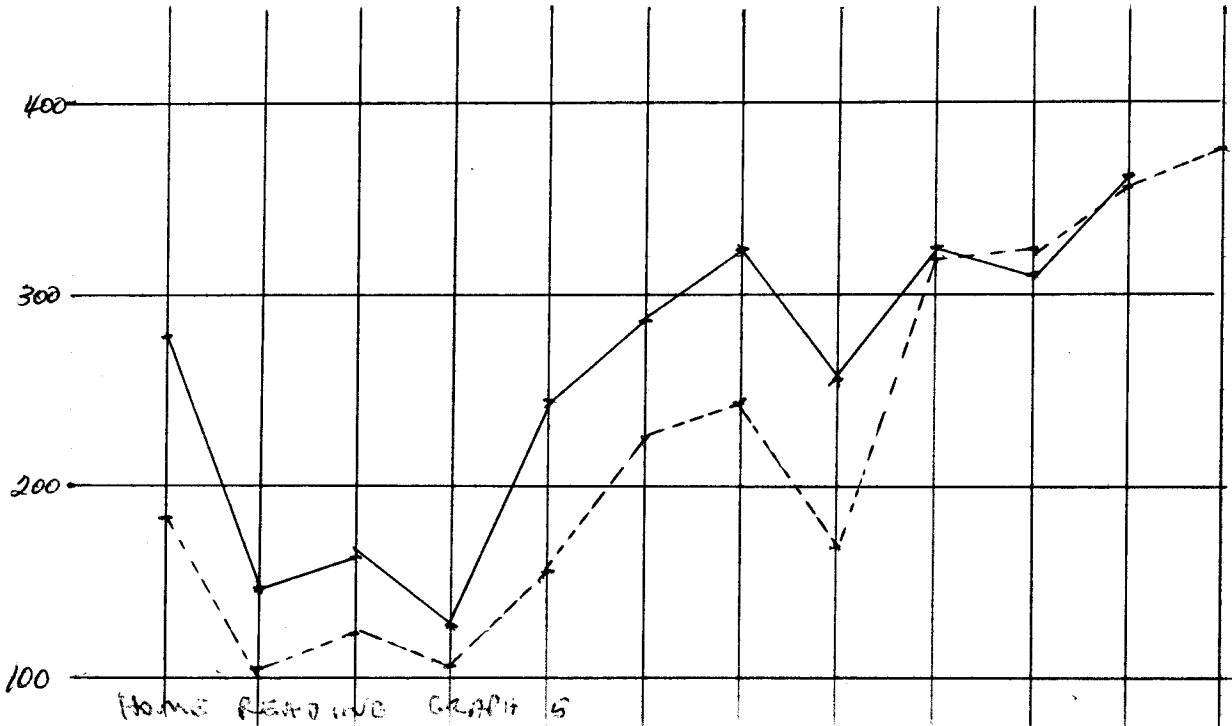


# GRAPH V HOME READING DEPT.

RECORDS - CIRC  
 '72/'73 ---  
 '73/'74 ———



PAMPHLETS - CIRC  
 '72/'73 ---  
 '73/'74 ———



HOME READING DEPT. GRAPH 5